

**Area Amenities Include:**

- Historic Downtown Westminster
- Agricultural Center & Shipley Arena
- Baughers Orchard
- Bear Branch Nature Center
- Carroll Arts Center
- Dutterer Park
- Theatre on the Hill
- Town Mall of Westminster
- Wakefield Valley Golf Club
- Westminster Community Center

**Public Schools:**

- William Winchester Elementary
- Westminster West Middle
- Winters Mill High

For more information and to be added to our interest list, please contact:

**Martin K. Austin, Realtor**  
**Long and Foster Real Estate Inc.**  
**410-598-7156**  
**Martin.Austin@longandfoster.com**

*Episcopal Housing Corporation is a nonprofit organization that was founded in 1995 committed to strengthening neighborhoods through housing and community development activities. Since our founding, EHC has developed over 125 units of affordable housing, including multifamily rentals, senior, and special needs housing.*



**New Townhomes**  
**In Historic Westminster**  
**Priced from \$112,000\***



*Conveniently located near McDaniel College, at the intersection of Pennsylvania Avenue and Union Street, these nine homes feature:*

- 3 Bedrooms, 1.5 Bathrooms
- 1450 Square Feet on 3 Levels
- Full Basement
- Energy Star Appliances
- Washer & Dryer
- Central Air Conditioning
- Gas Forced Air Heat
- Covered Front Porch
- Off Street Parking



**Episcopal Housing Corporation**

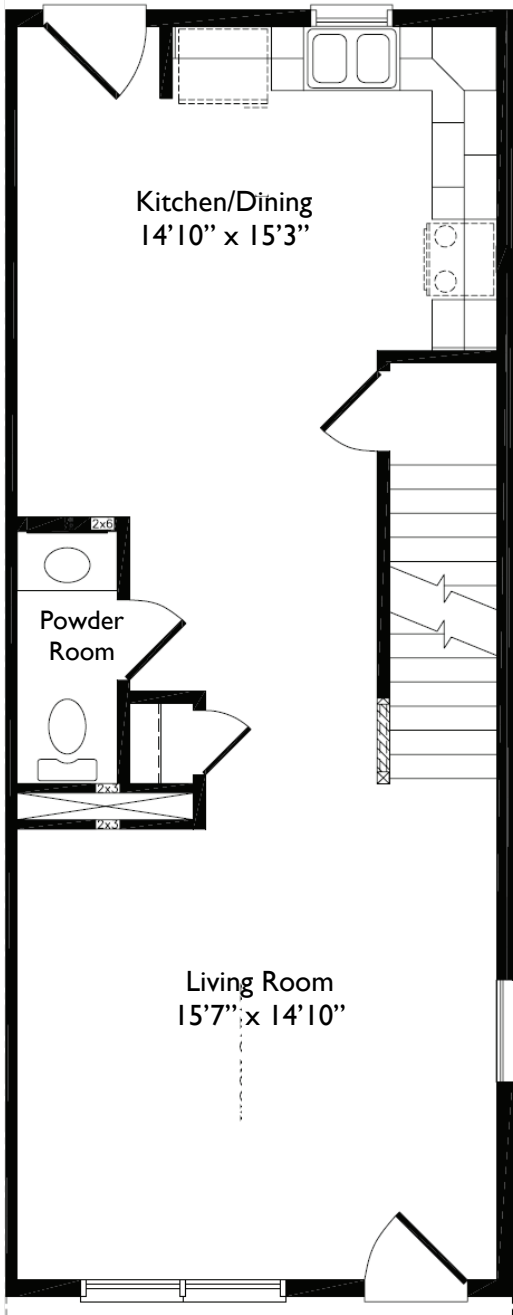
3900 Roland Avenue • Baltimore, Maryland 21211  
[www.episcopalhousing.org](http://www.episcopalhousing.org)



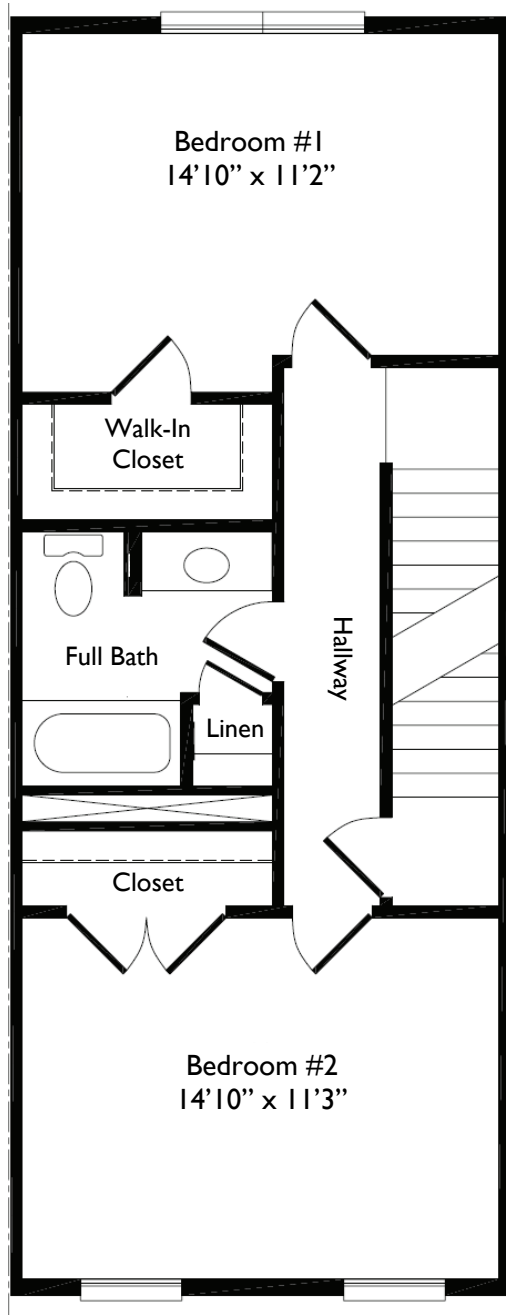
\*Sales price reflects reduction from soft second mortgage provided by State of Maryland HOME funds. Features and availability subject to change at any time without notice. Buyer eligibility restrictions apply. Please contact sales representative for more details.. MHR #6287



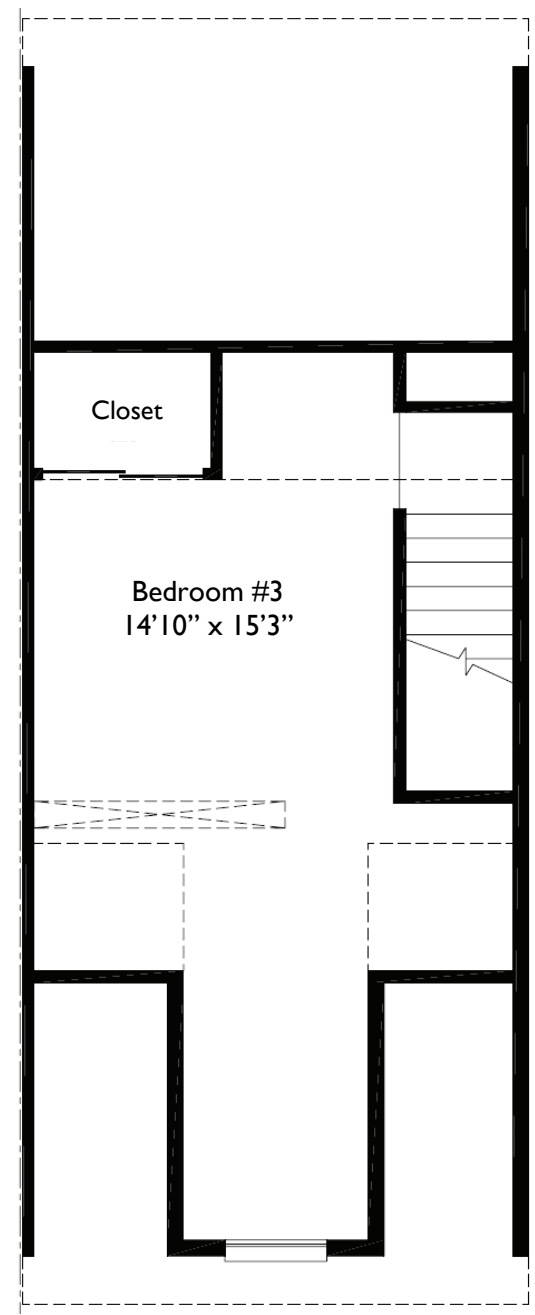
**Please Visit Our Website:**  
**[www.episcopalhousing.org](http://www.episcopalhousing.org)**



First Floor



Second Floor



Third Floor