

Area Amenities Include:

Historic Downtown Westminster
Agricultural Center & Shipley Arena
Baugher's Orchard
Bear Branch Nature Center
Carroll Arts Center
Dutterer Park
Theatre on the Hill
Town Mall of Westminster
Wakefield Valley Golf Club
Westminster Community Center

Public Schools:

William Winchester Elementary
Westminster West Middle
Winters Mill High

For more information and to be added to our interest list, please contact:

Steve L. Ferguson - Realtor
Long and Foster Real Estate, Inc.
Office: 410-876-7100 ext. 1237
E-mail: SteveFerguson@mris.com
Cell: 443-271-1873

Episcopal Housing Corporation is a nonprofit organization that was founded in 1995 committed to strengthening neighborhoods through housing and community development activities. Since our founding, EHC has developed over 125 units of affordable housing, including multifamily rentals, senior, and special needs housing.



New Townhomes In Historic Westminster Priced from \$174,600*



Conveniently located near McDaniel College, at the intersection of Pennsylvania Avenue and Union Street, these nine homes will feature:

- 3 Bedrooms, 1.5 Bathrooms
- 1450 Square Feet on 3 Levels
- Full Basement
- Energy Star Appliances
- Washer & Dryer
- Central Air Conditioning
- Gas Forced Air Heat
- Covered Front Porch
- Off Street Parking



Episcopal Housing Corporation

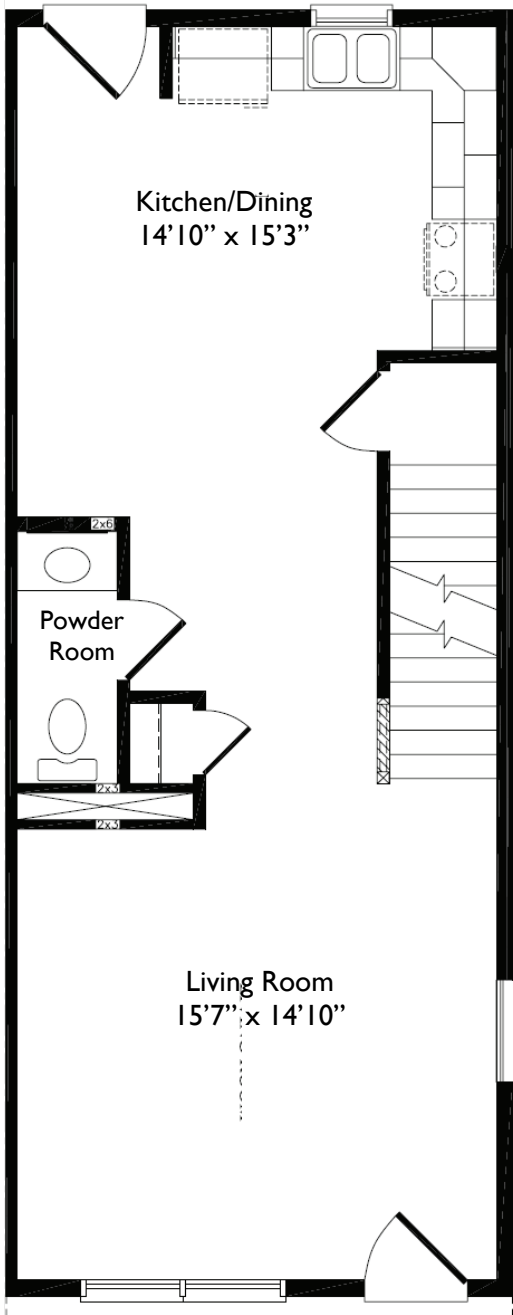
3900 Roland Avenue • Baltimore, Maryland 21211
www.episcopalhousing.org



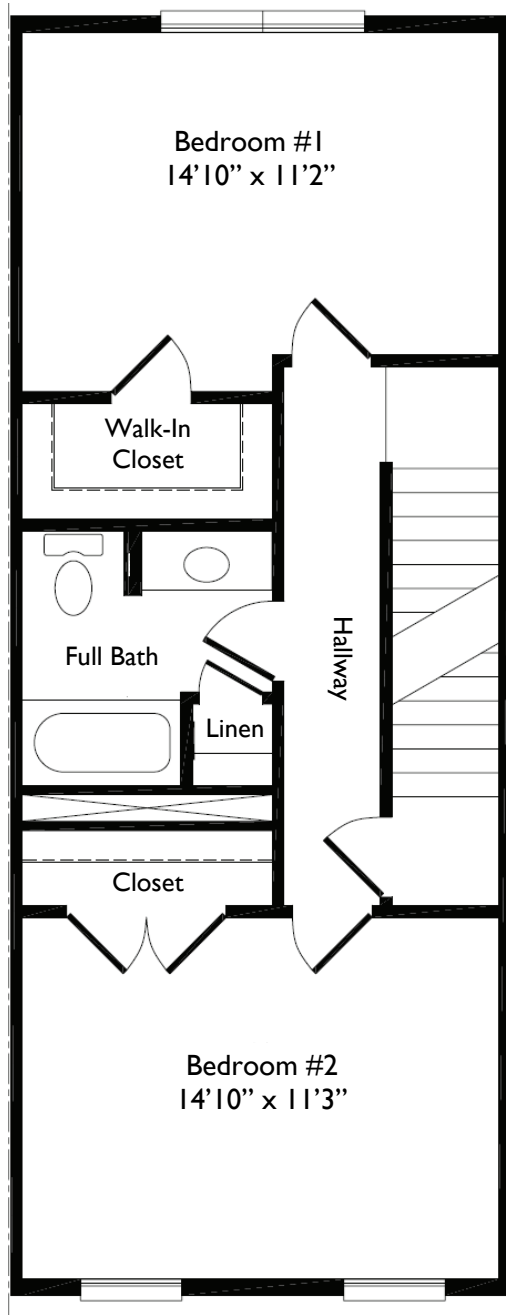
*Sales price reflects reduction from soft second mortgage provided by State of Maryland HOME funds. Features and availability subject to change at any time without notice. Buyer eligibility restrictions apply. Please contact sales representative for more details..
MHR #6287



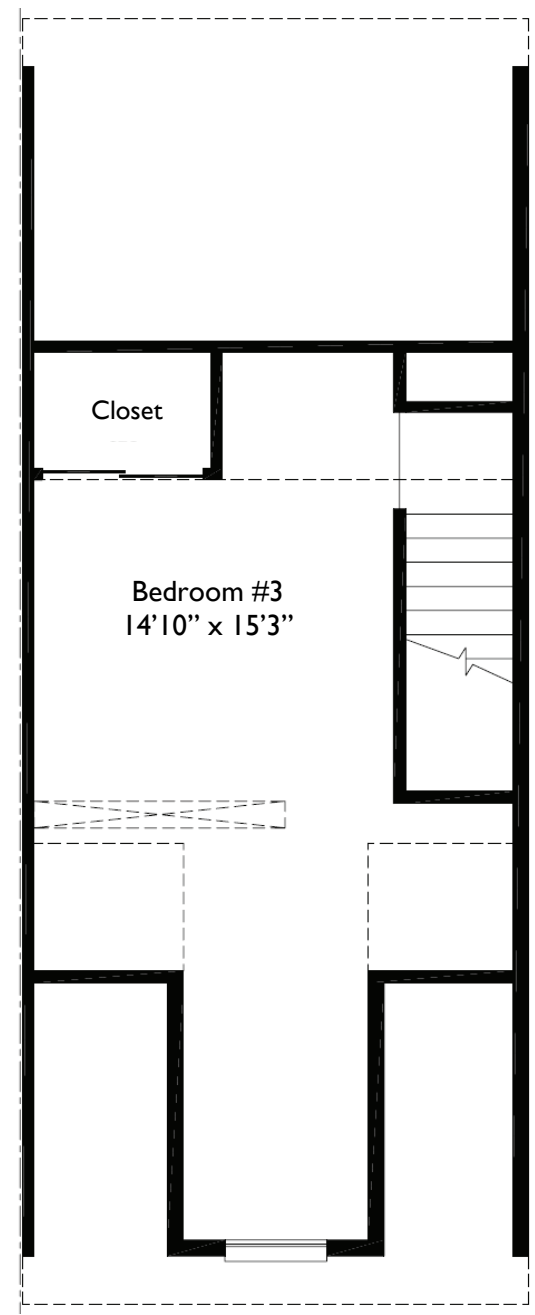
Please Visit Our Website:
www.episcopalhousing.org



First Floor



Second Floor



Third Floor